

2025.26

BROCHURE

www.designteq.net

info@designteq.net

833 312 3837

HEALTHCARE



DesignTeq

M.E.P.F.P

ENGINEERING

DESIGN

SERVICE

We are Engineers and
we provide solutions.



DesignTeq

HEALTHCARE

About Us

As engineers, we've come to realize that the most impactful creations, the ones that truly shape the future, don't just come from individual brilliance alone but from finding the right partner. Someone who has not just complementary skills but also embraces a shared vision, is a bedrock of unwavering integrity, and has the courage to pursue audacious dreams. That is who we are, and that is what we do. This understanding is the very foundation of our company.

Our professional identity is built on the belief that engineering is not just about solving problems but is also about fostering reliance. We want our clients to trust in our solutions & processes and we cultivate that trust through open communication by keeping them informed every step of the way, fostering a collaborative environment, and ensuring transparency.

We are passionate about bringing your aspirations to life. For us, engineering is the art of transforming abstract concepts into tangible realities. When you partner with us, you're not just hiring engineers but you're also gaining dedicated partners who are committed to understanding your needs, embracing your vision, and working tirelessly to make your dreams a reality.

Introduction

At DesignTeq, we understand the complexities of designing MEP.FP system for the Healthcare sector. Our engineers, with their years of experience in designing code-compliant specialized healthcare systems have the ability to create resilient, energy-efficient, and patient-centered healing environments.

We at DesignTeq are not just engineers who provide solutions. We are also your critical partner in successful project delivery and achieving your institutional mission.



DesignTeq

HEALTHCARE

Objective

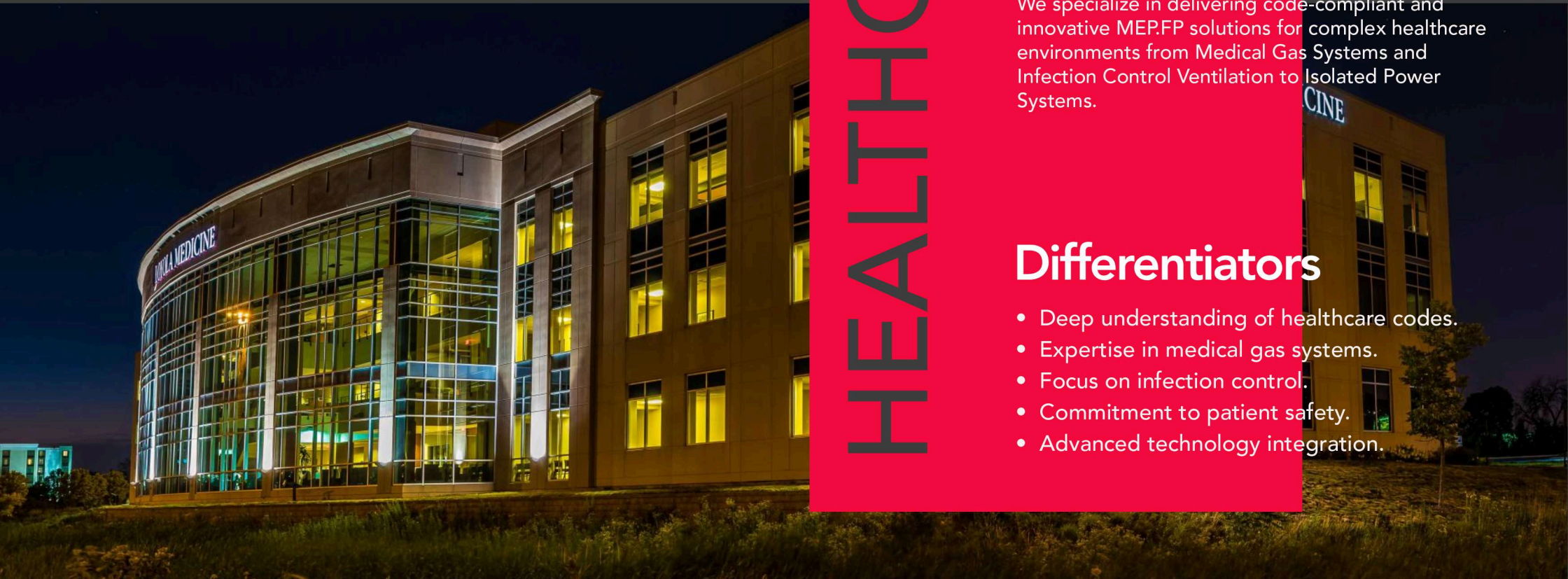
We aim to provide cutting-edge MEP.FP solutions that support patient care and medical advancements, with a long-term goal of becoming one of the leading MEP.FP engineering service provider in healthcare facility design.

Sector Specialization

We specialize in delivering code-compliant and innovative MEP.FP solutions for complex healthcare environments from Medical Gas Systems and Infection Control Ventilation to Isolated Power Systems.

Differentiators

- Deep understanding of healthcare codes.
- Expertise in medical gas systems.
- Focus on infection control.
- Commitment to patient safety.
- Advanced technology integration.





DesignTeq

HEALTHCARE

MEP.FP Engineering Design Services

We provide code-compliant general design services for standard building projects as well as specialized and innovative MEP.FP engineering solutions that is tailored for complex structural and design environments.

Mechanical Engineering

GENERAL DESIGN SERVICES

Heating and Cooling System, Ventilation and Air Distribution System, Energy-Efficient HVAC System, and more.

SPECIALIZED DESIGN SERVICES

Medical Gas System, Operating Room HVAC, Cleanroom Design, Infection Control Ventilation, MRI Shielding, and more.



Electrical Engineering

GENERAL DESIGN SERVICES

Lighting and Control Systems Design, Power Distribution, Nurse Call System, Essential Electrical System, Medical Equipment Power, and more.

SPECIALIZED DESIGN SERVICES

Power System Studies, Health Care Facility Code Compliance, CMS & Joint Commission Compliance, FGI & State Health Department Standards, and more.



Plumbing Engineering

GENERAL DESIGN SERVICES

Domestic and Sanitary Waste Systems, Hot Water Equipment Design, Storm Drainage, Vent System, and more.

SPECIALIZED DESIGN SERVICES

Water Purification System, Sterilization Plumbing, Reverse Osmosis System, DI Water System, Vacuum System, Medical Gas Piping System, Fuel Gas Piping System, and more.



Fire Protection

GENERAL DESIGN SERVICES

Sprinkler System, Fire Alarm System, Emergency Lighting System, Smoke Detection, and more.

SPECIALIZED DESIGN SERVICES

Cleanroom Fire Suppression, Medical Gas Shut-Off, Dry Pipe Sprinkler System, Pre-Action Sprinkler System, and more.



LUMC Ambulatory Care Center



Loyola University Medical Center's Ambulatory Care Center is the largest outpatient center in the Midwest and is located in Burr Ridge, Chicago. As a teaching hospital, the center houses orthopedics, cancer care, neurology, cardiology, dermatology, and faculty physicians, in-house. DesignTeq was tasked with providing MEP engineering services for the shell and core along with MEP designs of several build-outs of space within the structure, including a power generator system serving the life-safety element of the building.

PROJECT SPECIFICATION

LOCATION: Burr Ridge, Illinois

SERVICE PROVIDED: MEP.FP

AREA: 105, 000 SF

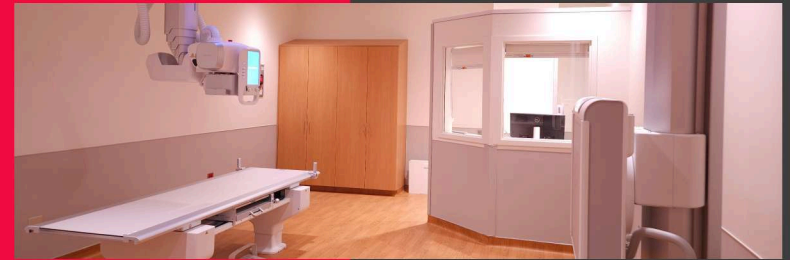


DesignTeq

HEALTHCARE



Loyola Medicine, Sterile Processing Department



Loyola Medicine, Imaging Center



St. Bernard Hospital, Ambulatory Care Center

TESTIMONIAL

“

Their responsiveness, technical expertise, and commitment to transparency ensured a seamless experience. Any concerns were addressed proactively and efficiently, eliminating surprises while fostering collaboration and confidence among all stakeholders.

”

DAVID A. NELSON, AIA, NCARB

Senior Principal, K2N Crest

We are DesignTeq and we help build dreams!



Eduardo Sanchez, P.E.
Founding Principal

Eduardo employs a hands-on approach involvement to every project from conception through completion.

Eduardo is a building code and safety protocol specialist who has an extensive experience in the education, commercial, retail, healthcare, industrial, and residential sector.



Neil Mantala
Founding Principal

Neil advances engineering excellence in every project they handle through his seamless integration of MEP design as a whole.

Neil specializes in mechanical and plumbing engineering system related to healthcare, commercial, educational, religious, hospitality, retail, and residential sector.



Chris Richter
Chief Strategy Officer

Chris joined DesignTeq bringing with him his 20+ years of industry experience. His understanding of the industry ecology led him to develop various innovative ways in navigating work-based dynamics to guarantee a successful project.

Chris specializes in Education, Healthcare, Life Science and Pharmaceutical related projects.



HEALTHCARE

AFFILIATIONS

ASHRAE (American Society of Heating, Refrigerating and Air-Conditioning Engineers)

ASPE (American Society of Plumbing Engineers)

NFPA (National Fire Protection Association)

HESNI (Healthcare Engineers Society of Northern Illinois)

ComEd EESP (Energy Efficiency Service Provider)

AMFP (Association of Medical Facilities Professionals)

CHEF (Chicago Healthcare Executive Forum)

MBE (Minority Business Enterprise, Chicago)



DesignTeq

Get in touch for a more expansive list of our healthcare experience, or to discuss a project partnership.

859 W. Erie St., Unit 803,
Chicago, Illinois, 60642

info@designteq.net

833 312 3837



www.designteq.net